



Woodland
Academy Trust

Digital Offer 2025-2026

Explore Apple, AI and EdTech events and support at
Woodland Academy Trust



Kent and Bexley



Regional Training Centre



London
**EdTech
Hubs**

Building the
EdTech Community

Powered by



WELCOME FROM OUR DIRECTOR OF EDUCATION



As Director of Education at Woodland Academy Trust, I am delighted to introduce our digital offer brochure, which showcases the collaborative work taking place across our family of primary schools in Bexley and Kent — and the opportunities we offer to visit, connect, and share effective practice.

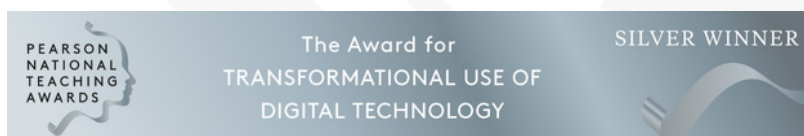
At the heart of our approach is a deep commitment to collaboration, creativity, and educational excellence. From our innovative use of technology to reduce teacher workload and enhance learning, to our strong focus on inclusion and equity, our schools work every day to give children the best possible start.

We are proud of what we've developed — from curriculum design and professional development offer to our strategic work on digital transformation. This brochure outlines how we collaborate with other schools and Trusts, sharing what's working well and learning together along the way.

Whether you're interested in visiting our schools, connecting around a project, exploring training opportunities, or finding out more about our work with AI and EdTech, we hope you discover something of value and inspiration here.

Warmest wishes,

Julie Carson



Explore our Offer

Apple Distinguished School Visits- In partnership with Sync	page 3
Apple Regional Training Centre Events	page 4
London EdTech Hub Events – In partnership with LGfL, Olex.AI and Magma Maths	page 5
Computing at School Hub Meetings: UDL and AI in Primary Computing	page 6
Bespoke Support for Schools: Digital Strategy and AI Integration	page 7, 8 & 9

Ignite the spark, reveal the champion



AMBITION



COLLABORATION



COMPASSION



EXCELLENCE



INCLUSIVITY

Apple Distinguished School Visits

In partnership with **sync**

Purpose of the Visits

Our Apple Distinguished School visits are designed to provide an authentic insight into how purposeful use of Apple technology is transforming teaching and learning across our Trust.

These full-day visits (9am-3pm) offer school leaders and educators the opportunity to:

- Observe real classroom practice where technology enhances pupil engagement, creativity, and independence.
- See how we embed digital skills within a broad and balanced curriculum.
- Explore how we use Apple tools to reduce teacher workload and streamline communication.
- Engage with staff and pupils to hear first-hand the impact of our digital strategy.
- Discover our approach to professional development, digital leadership, and long-term planning for sustainable innovation.

Each visit includes time for discussion, reflection, and practical takeaways, enabling leaders and educators to consider how elements of our practice could support their own strategic development.

We welcome colleagues at any stage of their digital journey – whether you're beginning to explore technology integration or looking to deepen and refine existing practice.

Date	ADS Visit Focus	Location
30 Sept 2025	Leadership / Strategy	Peareswood Primary
6 Nov 2025	Leadership / Strategy	Details to Follow
10 Dec 2025	Leadership / Strategy	Peareswood Primary
20 Jan 2026	Leadership / Strategy	Details to Follow
25 Feb 2026	Leadership / Strategy	Details to Follow
17 Mar 2026	Leadership / Strategy	Peareswood Primary
4 Jun 2026	Leadership / Strategy	Details to Follow
2 Jul 2026	Leadership / Strategy	Peareswood Primary



**Cost:
FREE**

Book Your Free Place

Apple Distinguished School Visits



Scan to Book



Apple Regional Training Centre Events

As an Apple Regional Training Centre for Kent and Bexley, we are proud to offer free, high-quality professional learning opportunities for educators across the region. Our events are designed to build confidence, spark ideas, and demonstrate how Apple technology can be used meaningfully to enhance teaching and learning.

These sessions are open to all educators and school leaders- whether you're just beginning your digital journey or looking to deepen your existing practice.

Each event offers:

- Practical strategies for using iPad and Apple tools in the classroom.
- Real examples of how technology can raise engagement, support inclusion, and reduce workload.
- Time to explore, ask questions, and connect with other educators.
- A welcoming and supportive environment led by experienced practitioners from our Trust.

We welcome you to join us and discover how digital tools can make a real difference in everyday practice.

Date	Event Focus	Location & Time
18 Sept 2025	Apple Teacher Part 1	VIRTUAL 15:45-16:45
2 Oct 2025	Apple Teacher Part 2	VIRTUAL 15:45-16:45
13 Nov 2025	Early Years Can Create Drawing	VIRTUAL 15:45-16:45
2 Dec 2025	Good Future AI- a new AI teaching tool by Good Future Foundation	VIRTUAL 15:45-16:45
15 Jan 2026	Sketches School	VIRTUAL 15:45-16:45
5 Mar 2026	Early Years Can Create – Photo + Video	VIRTUAL 15:45-16:45
21 May 2026	Numbers	VIRTUAL 15:45-16:45
11 Jun 2026	Early Years Can Create – AR + Podcasting	VIRTUAL 15:45-16:45



Cost:
FREE

Book Your Free Place Today

[Apple Regional Training Centre Events](#)



Scan to Book



London Edtech Hub Events

In partnership with    

As a London Grid for Learning (LGfL) EdTech Hub, we are proud to support schools across the region in exploring how educational technology can drive improvement, inclusion, and innovation.



Powered by



Our EdTech Hub events provide practical professional learning focused on making the most of a range of tools and approaches. Sessions are led by experienced educators and digital leaders from our Trust, and are grounded in real classroom practice.

Each full-day event offers

- Hands-on training and demonstrations tailored to the needs of schools.
- Strategies for using EdTech to raise attainment, reduce workload, and promote equity.
- Opportunities to explore AI, accessibility, safeguarding, and digital literacy.
- Time to network and collaborate with peers from other settings.
- Guidance on how to embed digital approaches into whole-school strategy.

We welcome all educators — whether you're looking to make the most of LGfL services, expand your use of technology, or shape a future-focused digital vision for your school.

Date	Event Focus	Location
14 Oct 2025	Olex.AI Platform Demo Day with special guest Baasit Siddiqui	Northumberland Heath Primary
27 Nov 2025	Inclusion	Willow Bank Primary
11 Feb 2026	Digital Approach to Reading	Peareswood Primary
31 Mar 2026	Magma Maths Demo Day	Knockhall Primary
19 May 2026	Tech in EYFS	Lime Wood Primary
14 Jul 2026	UDL and AI Expo	Details to Follow



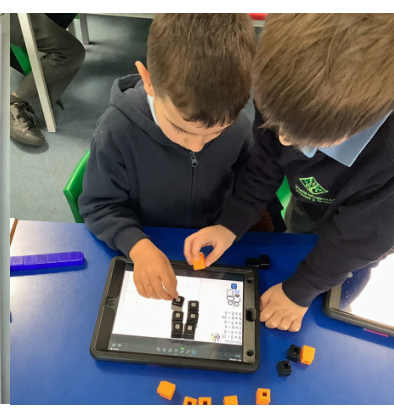
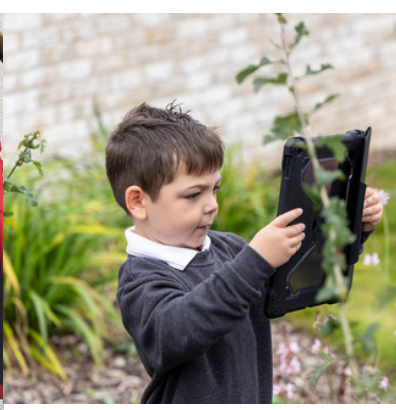
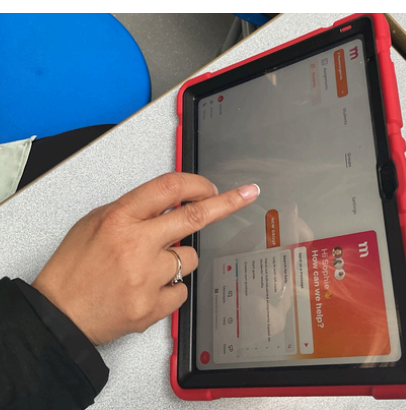
Cost:
FREE

Book Your Free Place Today

London EdTech Hub Events 



Scan to Book



Computing at School Hub Meetings

As a designated Computing at School (CAS) Community Hub, our focus is on exploring how Universal Design for Learning (UDL) and artificial intelligence (AI) can enrich and transform primary computing education.

Our CAS Hub meetings bring together educators who are interested in making computing more inclusive, engaging, and future-facing. Grounded in classroom practice and supported by national networks, the sessions are welcoming, practical, and thought-provoking.

Each meeting offers:

- Real-world examples of how UDL principles can make computing accessible to all learners.
- Exploration of how AI can support teaching and learning in computing and across the curriculum.
- Sharing of strategies, challenges and successes from across schools.
- Access to high-quality resources, research, and national updates via the CAS and NCCE networks.
- Space to build confidence, develop subject knowledge, and connect with like-minded professionals.

Whether you're just starting out or leading computing across your school or Trust, our CAS Hub is a space to collaborate, learn and grow together.

Date	Meeting Focus	Location & Time
25 Sept 2025	AI and UDL Leads- AI & Universal Design for Learning	Knockhall Primary 13:30-15:30
2 Dec 2025	AI Leads- AI in the classroom	VIRTUAL 13:30-15:30
4 Dec 2025	UDL Leads- Universal Design for Learning & Teacher Planning (design layer)	VIRTUAL 13:30-15:30
4 Feb 2026	AI Leads- AI in the classroom	VIRTUAL 13:30-15:30
5 Feb 2026	UDL Leads- Universal Design for Learning (multiple means of engagement)	VIRTUAL 13:30-15:30
3 Mar 2026	AI Leads- AI in the classroom	VIRTUAL 13:30-15:30
4 Mar 2026	UDL Leads- Universal Design for Learning (multiple means of representation)	VIRTUAL 13:30-15:30
28 Apr 2026	AI Leads- AI in the classroom	VIRTUAL 13:30-15:30
29 Apr 2026	UDL Leads- Universal Design for Learning (multiple means of action and expression)	VIRTUAL 13:30-15:30
23 Jun 2025	All Schools- AI & Universal Design for Learning	Knockhall Primary 13:30-15:30



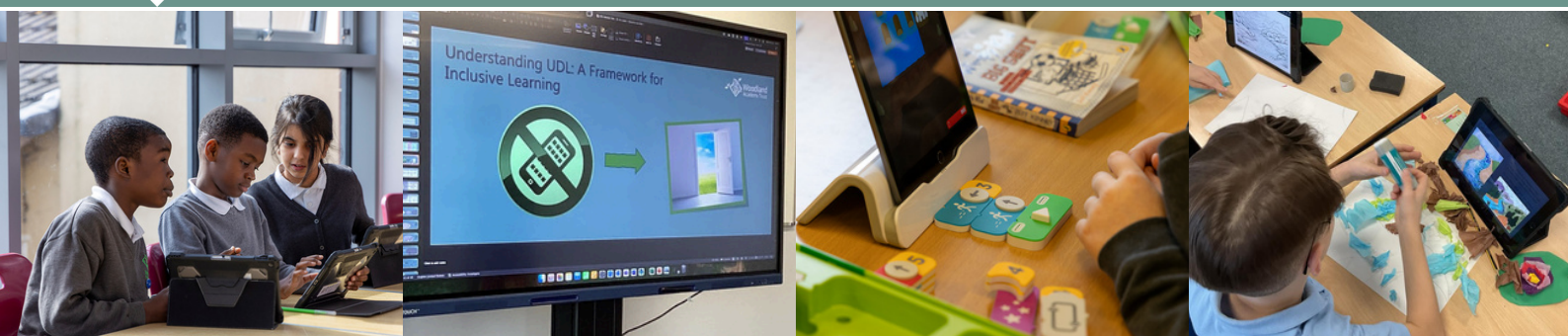
Cost:
FREE

Book Your Free Place Today

[Computing At Schools Hub Events](#)



Scan to Book



Bespoke Support for Schools: Digital Strategy and AI Integration

We understand that every school is at a different stage of its digital journey — and that one-size-fits-all solutions rarely meet the needs of individual contexts. That's why we offer flexible, bespoke support to help schools design and implement meaningful, sustainable approaches to digital innovation and AI integration.

Whether you're building from the ground up or refining existing practice, we can work alongside your team to develop a clear vision, grow staff confidence, and improve outcomes for pupils.

Our support is led by experienced school and Trust leaders who combine strategic insight with real classroom knowledge.

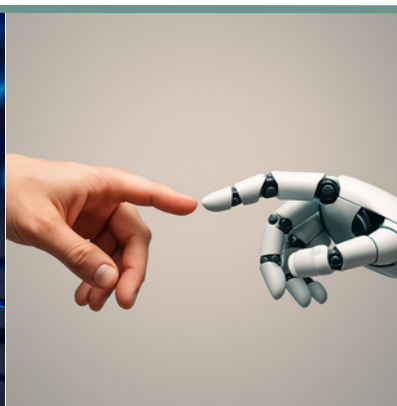
What We Can Offer

Helping school leaders create or improve their digital and AI strategy.

Reviewing what's already in place and suggesting realistic next steps.

Strategy and Vision

Supporting leaders to plan how digital technology fits into the wider school vision and priorities.



Bespoke Support for Schools: Digital Strategy and AI Integration

HR and Workforce

- Running practical sessions on how AI can reduce admin load.
- How to utilise AI to support recruitment and casework with smart prompt banks.
- How to use smarter workforce planning with AI-supported dashboards and data analysis.

Governance and Strategy

- Using AI to prepare meeting papers, summarise policies, and draft minutes.
- How to use AI to support risk management, SEFs, and strategic planning.
- Training on how to use AI safely and responsibly in governance roles.

AI in Trust Operations

Alleviating pressure on central Trust operations teams, we can offer practical, strategic support to embed AI in ways that enhance efficiency, reduce admin burden, and drive consistency across HR, Governance, Communications, and Compliance.

Compliance and Risk

- How AI can track deadlines, summarise key documents, and support audit readiness.
- Supporting teams to simplify safeguarding, Health & Safety, and data protection tasks using AI.
- Developing safe and practical workflows for compliance and reporting.

Communications

- Demonstrating how AI can generate high-quality letters, newsletters, and content.
- Using AI to create templates that support clear, timely staff and parent communications.
- Training on responsible AI use in Trust communications, including tone and messaging.

Bespoke Support for Schools: Digital Strategy and AI Integration

AI in Education

- Running practical sessions on how AI can save teachers time and support learning.
- Helping staff understand how to use AI safely, responsibly and effectively.
- Supporting curriculum teams to explore how AI tools can enhance different subjects.
- Advising on developing clear, staff-friendly guidance for using AI in school.

Enhancing Teaching

CPD and Staff Development

- Offering tailored training for all staff, including those new to teaching.
- Delivering twilight sessions, INSET days, and workshops focused on your priorities.
- Supporting digital champions and computing leads to grow in their roles.
- Helping you embed digital confidence across the whole staff team.

Teaching and Learning

- Demonstrating how iPad and Apple tools can be used in real classroom settings.
- Working with teachers to build confidence using technology in lessons.
- Showing how digital tools can help meet pupils' different needs and support inclusive practice.

Bespoke Support – Let's Talk

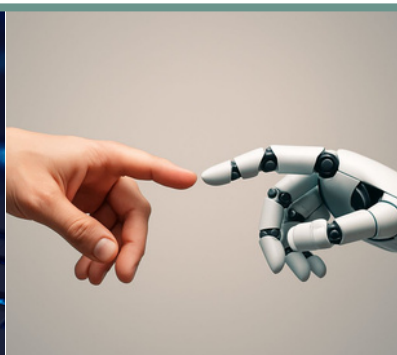
We support schools through the change process in a realistic and manageable way, ensuring that transitions are purposeful and sustainable. This includes helping with planning and communication when introducing new tools or systems.

We're happy to work with you to create a bespoke package that aligns with your school's goals – whether it's a single session, a short-term project, or ongoing support, we're here to help.

Contact us to discuss your needs.
Pricing available on request.



events@watschools.org.uk



Connect. Learn. Collaborate.

Discover and book our upcoming events via the Woodland Academy Trust Eventbrite page.



**Woodland Academy
Trust**



Scan to
View Events

Have a Question? Get in Touch:



events@watschools.org.uk



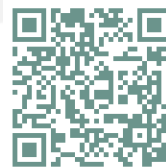
Woodland Academy Trust



@WOODlandAcademy



woodland_academy_trust



Woodland Academy Trust



@WoodlandAcademyTrust



Follow us

www.woodlandacademytrust.co.uk



Ignite the spark, reveal the champion